



BIOLOGY

Course Description

MAY 2006, MAY 2007

The College Board: Connecting Students to College Success

The College Board is a not-for-profit membership association whose mission is to connect students to college success and opportunity. Founded in 1900, the association is composed of more than 4,700 schools, colleges, universities, and other educational organizations. Each year, the College Board serves over three and a half million students and their parents, 23,000 high schools, and 3,500 colleges through major programs and services in college admissions, guidance, assessment, financial aid, enrollment, and teaching and learning. Among its best-known programs are the SAT[®], the PSAT/NMSQT[®], and the Advanced Placement Program[®] (AP[®]). The College Board is committed to the principles of excellence and equity, and that commitment is embodied in all of its programs, services, activities, and concerns.

For further information, visit www.collegeboard.com.

The College Board and the Advanced Placement Program encourage teachers, AP Coordinators, and school administrators to make equitable access a guiding principle for their AP programs. The College Board is committed to the principle that all students deserve an opportunity to participate in rigorous and academically challenging courses and programs. All students who are willing to accept the challenge of a rigorous academic curriculum should be considered for admission to AP courses. The Board encourages the elimination of barriers that restrict access to AP courses for students from ethnic, racial, and socioeconomic groups that have been traditionally under-represented in the AP Program. Schools should make every effort to ensure that their AP classes reflect the diversity of their student population.

Copyright © 2005 by College Entrance Examination Board. All rights reserved. College Board, Advanced Placement Program, AP, APCD, AP Central, AP Vertical Teams, Pre-AP, SAT, and the acorn logo are registered trademarks of the College Entrance Examination Board. Connect to college success is a trademark owned by the College Entrance Examination Board. PSAT/NMSQT is a registered trademark of the College Entrance Examination Board and National Merit Scholarship Corporation. All other products and services may be trademarks of their respective owners. Visit College Board on the Web: www.collegeboard.com

Dear Colleagues:

In 2004, nearly 15,000 schools offered high school students the opportunity to take AP[®] courses, and over 1.1 million students then took the challenging AP Exams. These students felt the power of learning come alive in the classroom, and many earned college credit and placement while still in high school. Behind these students were talented, hardworking teachers who are the heart and soul of the Advanced Placement Program[®].

The College Board is committed to supporting the work of AP teachers. This AP Course Description outlines the content and goals of the course, while still allowing teachers the flexibility to develop their own lesson plans and syllabi, and to bring their individual creativity to the AP classroom. Moreover, AP workshops and Summer Institutes, held around the globe, provide stimulating professional development for more than 60,000 teachers each year. The College Board Fellows stipends provide funds to support many teachers' attendance at these Institutes. Stipends are now also available to middle school and high school teachers who use Pre-AP[®] strategies.

Teachers and administrators can also visit AP Central[®], the College Board's online home for AP professionals, at apcentral.collegeboard.com. Here, teachers have access to a growing set of resources, information, and tools, from textbook reviews and lesson plans to electronic discussion groups (EDGs) and the most up-to-date exam information. I invite all teachers, particularly those who are new to the AP Program, to take advantage of these resources.

As we look to the future, the College Board's goal is to broaden access to AP classes while maintaining high academic standards. Reaching this goal will require a lot of hard work. We encourage you to connect students to college and opportunity not only by providing them with the challenges and rewards of rigorous academic programs like AP but also by preparing them in the years leading up to AP courses.

Sincerely,

A handwritten signature in black ink that reads "Gaston Caperton". The signature is fluid and cursive, with a large initial "G" and "C".

Gaston Caperton
President
The College Board

Contents

Welcome to the AP Program	1
AP Courses	1
AP Exams	1
AP Biology	3
Introduction	3
Goals of the Course	3
Themes, Topics, and Concepts	4
Major Themes	5
Topic Outline	5
Explanation of the Major Themes	7
Textbooks	8
The Laboratory	9
12 Recommended Biology Laboratories	11
The Exam	20
Sample Multiple-Choice Questions	21
Answers to Multiple-Choice Questions	36
Sample Free-Response Questions	37
AP Program Essentials	40
The AP Reading	40
AP Grades	40
Grade Distributions	40
Why Colleges Grant Credit, Placement, or Both for AP Grades	41
Guidelines on Setting Credit and Placement Policies for AP Grades	42
College and University AP Credit and Placement Policies	42
AP Scholar Awards	42
AP Calendar	43
Exam Security	43
Teacher Support	44
AP Central	44
Online Workshops and Events	45
Pre-AP	45
Pre-AP Professional Development	46
AP Publications and Other Resources	46
Free Resources	46
Priced Publications	48
Electronic Publications	50

Welcome to the AP® Program

The Advanced Placement Program (AP) is a collaborative effort between motivated students; dedicated teachers; and committed high schools, colleges, and universities. Since its inception in 1955, the Program has enabled millions of students to take college-level courses and exams, and to earn college credit or placement, while still in high school.

Most colleges and universities in the United States, as well as colleges and universities in more than 30 other countries, have an AP policy granting incoming students credit, placement, or both on the basis of their AP Exam grades. Many of these institutions grant up to a full year of college credit (sophomore standing) to students who earn a sufficient number of qualifying AP grades.

Each year, an increasing number of parents, students, teachers, high schools, and colleges and universities turn to the AP Program as a model of educational excellence.

More information about the AP Program is available at the back of this Course Description and at AP Central, the College Board's online home for AP professionals (apcentral.collegeboard.com). Students can find more information at the AP student site (www.collegeboard.com/apstudents).

AP Courses

Thirty-eight AP courses in a wide variety of subject areas are available now or are under development. A committee of college faculty and master AP teachers designs each AP course to cover the information, skills, and assignments found in the corresponding college course. See page 2 for a complete list of AP courses and exams.

AP Exams

Each AP course has a corresponding exam that participating schools worldwide administer in May (except for AP Studio Art, which is a portfolio assessment). AP Exams contain multiple-choice questions and a free-response section (either essay or problem solving).

AP Exams are a culminating assessment in all AP courses and are thus an integral part of the Program. As a result, many schools foster the expectation that students who enroll in an AP course will take the corresponding AP Exam. Because the College Board is committed to providing

access to AP Exams for homeschooled students and students whose schools do not offer AP courses, it does not require students to take an AP course prior to taking an AP Exam.

AP Courses and Exams

Art

Art History
Studio Art: 2-D Design
Studio Art: 3-D Design
Studio Art: Drawing

Biology

Calculus

Calculus AB
Calculus BC

Chemistry

Chinese Language and Culture (2006-07)

Computer Science

Computer Science A
Computer Science AB

Economics

Macroeconomics
Microeconomics

English

English Language and Composition
English Literature and Composition

Environmental Science

French

French Language
French Literature

German Language

Government and Politics

Comparative Government and
Politics
United States Government and
Politics

History

European History
United States History
World History

Human Geography

Italian Language and Culture (2005-06)

Japanese Language and Culture (2006-07)

Latin

Latin Literature
Latin: Vergil

Music Theory

Physics

Physics B
Physics C: Electricity and
Magnetism
Physics C: Mechanics

Psychology

Russian Language and Culture (Date to be determined)

Spanish

Spanish Language
Spanish Literature

Statistics

AP Biology

Introduction

The AP Biology course is designed to be the equivalent of a two-semester college introductory biology course usually taken by biology majors during their first year. After showing themselves to be qualified on the AP Exam, some students, in their freshman year, are permitted to undertake upper-level courses in biology or to register for courses for which biology is a prerequisite. Other students may have fulfilled a basic requirement for a laboratory-science course and will be able to undertake other courses to pursue their majors.

AP Biology should include those topics regularly covered in a college biology course for majors. The college course in biology differs significantly from the usual first high school course in biology with respect to the kind of textbook used, the range and depth of topics covered, the type of laboratory work done by students, and the time and effort required of students. The textbooks used for AP Biology should be those used by college biology majors. The kinds of labs done by AP students must be the equivalent of those done by college students.

The AP Biology course is designed to be taken by students after the successful completion of a first course in high school biology and one in high school chemistry as well. It aims to provide students with the conceptual framework, factual knowledge, and analytical skills necessary to deal critically with the rapidly changing science of biology.

Goals of the Course

The AP Biology Development Committee conducts surveys in which professors at colleges regularly receiving the most AP students respond to a questionnaire asking them to describe the content of their introductory biology courses for biology majors. The AP Course Description that follows was developed by the committee after a thorough analysis of survey results.

The AP Biology Exam seeks to be representative of the topics covered by the survey group. Accordingly, goals have been set for percentage coverage of three general areas:

- I. Molecules and Cells, 25%
- II. Heredity and Evolution, 25%
- III. Organisms and Populations, 50%

These three areas have been subdivided into major categories with percentage goals specified for each. The percentage goals should serve as a guide for designing an AP Biology course and may be used to apportion the time devoted to each category. The exam is constructed using the percentage goals as guidelines for question distribution.

The two main goals of AP Biology are to help students develop a conceptual framework for modern biology and an appreciation of science as a process. The ongoing knowledge explosion in biology makes these goals even more challenging. Primary emphasis in an AP Biology course should be on developing an understanding of concepts rather than on memorizing terms and technical details. Essential to this conceptual understanding are a grasp of science as a process rather than as an accumulation of facts; personal experience in scientific inquiry; recognition of unifying themes that integrate the major topics of biology; and application of biological knowledge and critical thinking to environmental and social concerns.

The following guidelines are offered to help teachers and their students focus on unifying themes and key concepts.

Themes, Topics, and Concepts

Themes, topics, and concepts all give structure to an AP Biology course. This book defines *themes* as overarching features of biology that apply throughout the curriculum. *Topics* are the subject areas in biology, and *concepts* are the most important ideas that form our current understanding of a particular topic.

An example of a topic is “cellular respiration.” In a conceptual approach to this topic, for example, it is important to understand how membranes couple ATP synthesis to the energy released by electron transport. This key concept stands above discrete “facts,” such as the role of a particular cytochrome in electron transport.

Emphasizing concepts over facts makes the content of a biology course more meaningful and less overwhelming. A biology course has more structure and meaning when the key concepts for each topic are placed in the broader context of unifying themes. As an example, the theme of “energy transfer” helps students connect topics as diverse as cellular respiration and ecosystem dynamics. Concepts are the key ideas, restricted in scope to a certain topic. Themes cut across the topics. Increasingly, the AP Biology Exam will emphasize the themes and concepts of biology and place less weight on specific facts.

The next few sections of this book reinforce the relationships of themes and concepts to the topics in an AP Biology course. First is a suggested list of themes. Following this list is a topic outline that organizes biology into subject areas. Then there are explanations of the items in the suggested list of themes with a specific example for each one.

Major Themes

- I. Science as a Process
- II. Evolution
- III. Energy Transfer
- IV. Continuity and Change
- V. Relationship of Structure to Function
- VI. Regulation
- VII. Interdependence in Nature
- VIII. Science, Technology, and Society

Topic Outline

<i>Topic</i>	<i>Percentage of Course</i>
I. Molecules and Cells	25%
A. Chemistry of Life	7%
Water	
Organic molecules in organisms	
Free energy changes	
Enzymes	
B. Cells	10%
Prokaryotic and eukaryotic cells	
Membranes	
Subcellular organization	
Cell cycle and its regulation	
C. Cellular Energetics	8%
Coupled reactions	
Fermentation and cellular respiration	
Photosynthesis	

<i>Topic</i>	<i>Percentage of Course</i>
II. Heredity and Evolution	25%
A. Heredity	8%
Meiosis and gametogenesis	
Eukaryotic chromosomes	
Inheritance patterns	
B. Molecular Genetics	9%
RNA and DNA structure and function	
Gene regulation	
Mutation	
Viral structure and replication	
Nucleic acid technology and applications	
C. Evolutionary Biology.	8%
Early evolution of life	
Evidence for evolution	
Mechanisms of evolution	
III. Organisms and Populations	50%
A. Diversity of Organisms.	8%
Evolutionary patterns	
Survey of the diversity of life	
Phylogenetic classification	
Evolutionary relationships	
B. Structure and Function of Plants and Animals	32%
Reproduction, growth, and development	
Structural, physiological, and behavioral adaptations	
Response to the environment	
C. Ecology	10%
Population dynamics	
Communities and ecosystems	
Global issues	

Explanation of the Major Themes

The AP Biology Development Committee has identified eight major themes that recur throughout the course (see page 5). AP Biology teachers should emphasize the pervasiveness of the themes to assist students in organizing concepts and topics into a coherent conceptual framework.

- I. **Science as a Process**—Science is a way of knowing. It can involve a discovery process using inductive reasoning, or it can be a process of hypothesis testing.

Example: The theory of evolution was developed based on observation and experimentation.

- II. **Evolution**—Evolution is the biological change of organisms that occurs over time and is driven by the process of natural selection. Evolution accounts for the diversity of life on Earth.

Example: Widespread use of antibiotics has selected for antibiotic resistance in disease-causing bacteria.

- III. **Energy Transfer**—Energy is the capacity to do work. All living organisms are active (living) because of their abilities to link energy reactions to the biochemical reactions that take place within their cells.

Example: The energy of sunlight, along with carbon dioxide and water, allows plant cells to make organic materials, synthesize chemical energy molecules, and ultimately release oxygen to the environment.

- IV. **Continuity and Change**—All species tend to maintain themselves from generation to generation using the same genetic code. However, there are genetic mechanisms that lead to change over time, or evolution.

Example: Mitosis consistently replicates cells in an organism; meiosis (and hence sexual reproduction) results in genetic variability.

- V. **Relationship of Structure to Function**—The structural levels from molecules to organisms ensure successful functioning in all living organisms and living systems.

Example: Aerodynamics of a bird's wing permits flight.

VI. **Regulation**—Everything from cells to organisms to ecosystems is in a state of dynamic balance that must be controlled by positive or negative feedback mechanisms.

Example: Body temperature is regulated by the brain via feedback mechanisms.

VII. **Interdependence in Nature**—Living organisms rarely exist alone in nature.

Example: Microscopic organisms can live in a symbiotic relationship in the intestinal tract of another organism; the host provides shelter and nutrients, and the microorganisms digest the food.

VIII. **Science, Technology, and Society**—Scientific research often leads to technological advances that can have positive and/or negative impacts upon society as a whole.

Example: Biotechnology has allowed the development of genetically modified plants.

Textbooks

A number of recently published textbooks are appropriate for college students enrolled in introductory courses for biology majors. The AP Biology teacher should examine a variety of textbooks and use one that will adequately cover the suggested AP syllabus in a manner and style satisfactory to the teacher and students. Among the major considerations to be used in choosing a text are: depth and breadth of coverage, quality of illustrations, level and attractiveness of writing, clarity of presentation, value of end-of-chapter questions, availability of other teaching aids, and capacity to stimulate the student's interest. Whenever possible, a recently published textbook should be chosen so as to ensure that the information it contains is current and accurate. School systems should recognize that the rapidly changing nature of biology requires frequent purchasing of new textbooks for AP Biology. While textbooks serve as valuable references, they cannot always be exhaustive and up to date. Professional development—especially remaining current with new discoveries and conceptual trends—is a responsibility of any AP instructor.

The Teachers' Resources section of AP Central (apcentral.collegeboard.com) also offers reviews of textbooks, articles, Web sites, and other teaching resources.

The Laboratory

Laboratory experience must be included in all AP Biology courses. Since one-fourth to one-third of the credit in most college introductory biology courses is derived from laboratory work, it follows that approximately the same degree of emphasis should be placed on laboratory experience in an AP course. Descriptive and experimental laboratory exercises should be assigned that will provide the maximum opportunity for students to learn a variety of skills and those facts, principles, and concepts of general biology covered in lectures, reading, and discussion. In addition, good laboratory exercises can present novel material not covered in other parts of the course. Laboratory work should encourage the development of important skills such as detailed observation, accurate recording, experimental design, manual manipulation, data interpretation, statistical analysis, and operation of technical equipment. Laboratory assignments offer the opportunity for students to learn about problem solving, the scientific method, the techniques of research, and the use of scientific literature. Laboratory investigations also encourage higher-order thinking, which may include evaluating and monitoring progress through an investigation, generating ideas, and formulating hypotheses.

Surveys confirmed that most colleges and universities have a laboratory component in their general biology courses that are taken by majors or by a combination of majors and nonmajors. In teaching AP Biology, teachers are challenged to teach a course that is equivalent to a college-level course in both quality and sophistication. In order to reflect these aspects, every AP Biology course should therefore have a substantial laboratory component. The AP Biology Development Committee has produced a set of 12 laboratories to provide a standard with which teachers can begin integrating laboratories more efficiently into the AP Biology curriculum.

School administrators should be aware that an AP college-level laboratory is significantly more expensive to operate than a typical high school biology laboratory and requires more time than nonlaboratory courses. The first-level college course consists of approximately 40 to 50 hours of lecture and 30 to 40 hours of laboratory work per quarter or semester. Proportional allocations of time for laboratory work should be accorded an AP Biology course. School administrators should provide the equivalent of two double periods a week for laboratory work.

Some of the laboratories will require equipment schools may not have; alternative ways of conducting the laboratories are therefore offered. Schools should try to purchase college-level laboratory equipment eventually. Many teachers have indicated that their administrations do not

fully realize the implications, in both cost and time, of incorporating serious laboratories into their programs. An AP course is a college course, and the equipment and time allotted to laboratories should be similar to that in a college course.

Many laboratories that teachers are already conducting are worthwhile and important. The laboratory section in this book describes the objectives of 12 laboratories that have been developed by the AP Biology Development Committee. The laboratories are not “perfect” or “ultimate” but exemplify experimental and quantitative, rather than descriptive, laboratory exercises. They are intended to challenge students’ abilities to understand problems, develop and implement appropriate experimental designs, manipulate data, draw conclusions, think analytically, and develop hypotheses. In these laboratories, students are challenged to perform experiments drawn from some of the more important areas within modern biology, including biological chemistry, cell structure and function, energy transformation, molecular genetics, heredity, plant structure and physiology, animal structure and physiology, behavior, and ecology.

The laboratories should be considered basic introductions to, or springboards into, further experiments, studies, or independent projects. They are not intended to be ends in themselves. The AP Biology Development Committee thanks the countless AP Biology teachers who have supported and encouraged the committee’s commitment to introduce and maintain a laboratory component in the AP Biology curriculum. The field testing and “hands-on” experiences of AP teachers have generated many of the suggestions that are incorporated into these laboratories. The committee welcomes feedback as to how effectively the laboratories work and how they have been integrated into a school’s program. Such contributions and suggestions will be used to fine-tune or replace the laboratories over the coming years.

To allow students to show their mastery of laboratory science skills and knowledge, each year some questions on the objective portion of the AP Biology Exam and/or one or more of the four mandatory essay questions may reflect the topics and objectives associated with the 12 AP Biology laboratories. *This should not preclude AP Biology teachers from using their own existing laboratory exercises as long as they encompass the same topics and objectives.*

12 Recommended Biology Laboratories

Laboratory Topic

1. Diffusion and Osmosis
2. Enzyme Catalysis
3. Mitosis and Meiosis
4. Plant Pigments and Photosynthesis
5. Cell Respiration
6. Molecular Biology
7. Genetics of Organisms
8. Population Genetics and Evolution
9. Transpiration
10. Physiology of the Circulatory System
11. Animal Behavior
12. Dissolved Oxygen and Aquatic Primary Productivity

An overview and objectives are presented for each laboratory on the pages that follow. Teachers can use this information in conjunction with their own laboratories that address these topics and objectives, or in conjunction with the *AP Biology Laboratory Manual for Students* and the *AP Biology Laboratory Manual for Teachers* (go to AP Central for ordering information).

Laboratory 1. Diffusion and Osmosis

Overview

In this laboratory, students will investigate the processes of diffusion and osmosis in a model of a membrane system. They will also investigate the effect of solute concentration on water potential as it relates to living plant tissues.

Objectives

Before doing this laboratory, students should understand:

- the mechanisms of diffusion and osmosis and their importance to cells;
- the effects of solute size and concentration gradients on diffusion across selectively permeable membranes;
- the effects of a selectively permeable membrane on diffusion and osmosis between two solutions separated by the membrane;
- the concept of water potential;
- the relationship between solute concentration and pressure potential and the water potential of a solution; and
- the concept of molarity and its relationship to osmotic concentration.

After doing this laboratory, students should be able to:

- measure the water potential of a solution in a controlled experiment;
- determine the osmotic concentration of living tissue or an unknown solution from experimental data;
- describe the effects of water gain or loss in animal and plant cells; and
- relate osmotic potential to solute concentration and water potential.

Laboratory 2. Enzyme Catalysis

Overview

In this laboratory, students will observe the conversion of hydrogen peroxide (H_2O_2) to water and oxygen gas by the enzyme catalase. They will then measure the amount of oxygen generated and calculate the rate of the enzyme-catalyzed reaction.

Objectives

Before doing this laboratory, students should understand:

- the general functions and activities of enzymes;
- the relationship between the structure and function of enzymes;
- the concept of initial reaction rates of enzymes;
- how the concept of free energy relates to enzyme activity; and
- that changes in temperature, pH, enzyme concentration, and substrate concentration can affect the initial reaction rates of enzyme-catalyzed reactions.

After doing this laboratory, students should be able to:

- measure the effects of changes of temperature, pH, enzyme concentration, and substrate concentration on reaction rates of an enzyme-catalyzed reaction in a controlled experiment; and
- explain how environmental factors affect the rate of enzyme-catalyzed reactions.

Laboratory 3. Mitosis and Meiosis

Overview

In this laboratory, students will investigate the process of mitosis and meiosis. The first part is a study of mitosis. They will use prepared slides of onion root tips to study plant mitosis and to calculate the relative duration of the phases of mitosis in the meristem of root tissue. Prepared slides of the whitefish blastula will be used to study mitosis in animal cells and to compare animal mitosis with plant mitosis.

The second part is a study of meiosis. Students will simulate the stages of meiosis by using chromosome models. They will study the crossing over and recombination that occurs during meiosis. They will observe the arrangements of ascospores in the asci from a cross between wild type *Sordaria fimicola* and mutants for tan spore coat color in the fungus. These arrangements will be used to estimate the percentage of crossing over that occurs between the centromere and the gene that controls the tan spore color.

Objectives

Before doing this laboratory, students should understand:

- the events of mitosis in animal and plant cells;
- the events of meiosis (gametogenesis) in animal and plant cells; and
- the key mechanical and genetic differences between meiosis and mitosis.

After doing this laboratory, students should be able to:

- recognize the stages of mitosis in a plant or animal cell;
- calculate the relative duration of the cell cycle stages;
- describe how independent assortment and crossing over can generate genetic variation among the products of meiosis;
- use chromosome models to demonstrate the activity of chromosomes during meiosis I and meiosis II;
- relate chromosome activity to Mendelian segregation and independent assortment;
- demonstrate the role of meiosis in the formation of gametes in a controlled experiment, using a model organism;
- calculate the map distance of a particular gene from a chromosome's center or between two genes, using a model organism;
- compare and contrast the results of meiosis and mitosis in plant cells; and
- compare and contrast the results of meiosis and mitosis in animal cells.

Laboratory 4. Plant Pigments and Photosynthesis

Overview

In this laboratory, students will separate plant pigments using chromatography. They will also measure the rate of photosynthesis in isolated chloroplasts. The measurement technique involves the reduction of the dye, DPIP. The transfer of electrons during the light-dependent reactions of photosynthesis reduces DPIP, and it changes from blue to colorless.

Objectives

Before doing this laboratory, students should understand:

- how chromatography separates two or more compounds that are initially present in a mixture;
- the process of photosynthesis;
- the function of plant pigments;
- the relationship between light wavelength and photosynthetic rate; and
- the relationship between light intensity and photosynthetic rate.

After doing this laboratory, students should be able to:

- separate pigments and calculate their R_f values;
- describe a technique to determine photosynthetic rates;
- compare photosynthetic rates at different temperatures, or different light intensities, or different wavelengths of light using controlled experiments; and
- explain why the rate of photosynthesis varies under different environmental conditions.

Laboratory 5. Cell Respiration

Overview

In this experiment, students will work with seeds that are living but dormant. A seed contains an embryo plant and a food supply surrounded by a seed coat. When the necessary conditions are met, germination occurs, and the rate of cellular respiration greatly increases. In this laboratory, students will measure oxygen consumption during germination. They will measure the change in gas volume in respirometers containing either germinating or nongerminating peas. In addition, they will measure the respiration of these peas at two different temperatures.

Objectives

Before doing this laboratory, students should understand:

- how a respirometer works in terms of the gas laws; and
- the general processes of metabolism in living organisms.

After doing this laboratory, students should be able to:

- calculate the rate of cell respiration from experimental data;
- relate gas production to respiration rate; and
- test the effects of temperature on the rate of cell respiration in ungerminated versus germinated seeds in a controlled experiment.

Laboratory 6. Molecular Biology

Overview

In this laboratory, students will investigate some basic principles of genetic engineering. Plasmids containing specific fragments of foreign DNA will be used to transform *Escherichia coli* cells, conferring antibiotic (ampicillin) resistance. Restriction enzyme digests of phage lambda DNA will also be used to demonstrate techniques for separating and identifying DNA fragments using gel electrophoresis.

Objectives

Before doing this laboratory, students should understand:

- how gel electrophoresis separates DNA molecules present in a mixture;
- the principles of bacterial transformation;
- the conditions under which cells can be transformed;
- the process of competent cell preparation;
- how a plasmid can be engineered to include a piece of foreign DNA;
- how plasmid vectors are used to transfer genes;
- how antibiotic resistance is transferred between cells;
- how restriction endonucleases function; and
- the importance of restriction enzymes to genetic engineering experiments.

After doing this laboratory, students should be able to:

- use plasmids as vectors to transform bacteria with a gene for antibiotic resistance in a controlled experiment;
- demonstrate how restriction enzymes are used in genetic engineering;
- use electrophoresis to separate DNA fragments;
- describe the biological process of transformation in bacteria;
- calculate transformation efficiency;
- be able to use multiple experimental controls;
- design a procedure to select positively for antibiotic resistant transformed cells; and
- determine unknown DNA fragment sizes when given DNA fragments of known size.

Laboratory 7. Genetics of Organisms

Overview

In this laboratory, students will use living organisms to do genetic crosses. They will learn how to collect and manipulate the organisms, collect data from F1 and F2 generations, and analyze the results from a monohybrid, dihybrid, or sex-linked cross. The procedures that follow apply to fruit flies; teachers may substitute other procedures using different organisms.

Objectives

Before doing this laboratory, students should understand:

- chi-square analysis of data; and
- the life cycle of diploid organisms useful in genetics studies.

After doing this laboratory, students should be able to:

- investigate the independent assortment of two genes and determine whether the two genes are autosomal or sex-linked using a multi-generation experiment; and
- analyze the data from their genetic crosses using chi-square analysis techniques.

Laboratory 8. Population Genetics and Evolution

Overview

In this activity, students will learn about the Hardy-Weinberg law of genetic equilibrium and study the relationship between evolution and changes in allele frequency by using their class to represent a sample population.

Objectives

Before doing this laboratory, students should understand:

- how natural selection can alter allelic frequencies in a population;
- the Hardy-Weinberg equation and its use in determining the frequency of alleles in a population; and
- the effects on allelic frequencies of selection against the homozygous recessive or other genotypes.

After doing this laboratory, students should be able to:

- calculate the frequencies of alleles and genotypes in the gene pool of a population using the Hardy-Weinberg formula; and
- discuss natural selection and other causes of microevolution as deviations from the conditions required to maintain Hardy-Weinberg equilibrium.

Laboratory 9. Transpiration

Overview

In this laboratory, students will apply what they learned about water potential from Laboratory 1 (Diffusion and Osmosis) to the movement of water within the plant. They will measure transpiration under different laboratory conditions. They will also study the organization of the plant stem and leaf as it relates to these processes by observing sections of tissue.

Objectives

Before doing this laboratory, students should understand:

- how water moves from roots to leaves in terms of the physical/chemical properties of water and the forces provided by differences in water potential;
- the role of transpiration in the transport of water within a plant; and
- the structures used by plants to transport water and regulate water movement.

After doing this laboratory, students should be able to:

- test the effects of environmental variables on rates of transpiration using a controlled experiment; and
- make thin sections of stem, identify xylem and phloem cells, and relate the function of these vascular tissues to the structures of their cells.

Laboratory 10. Physiology of the Circulatory System

Overview

In Exercise 10A, students will learn how to measure blood pressure. In Exercise 10B, they will measure pulse rate under different conditions: standing, reclining, after the baroreceptor reflex, and during and immediately after exercise. The blood pressure and pulse rate will be analyzed and related to an index of relative fitness. In Exercise 10C, they will measure the effect of temperature on the heart rate of the water flea, *Daphnia magna*.

Objectives

Before doing this laboratory, students should understand:

- the relationship between temperature and the rates of physiological processes; and
- basic anatomy of various circulatory systems.

After doing this laboratory, students should be able to:

- measure heart rate and blood pressure in a human volunteer;
- describe the effect of changing body position on heart rate and blood pressure;
- explain how exercise changes heart rate;
- determine a human's fitness index;
- analyze cardiovascular data collected by the entire class; and
- discuss and explain the relationship between heart rate and temperature.

Laboratory 11. Animal Behavior

Overview

In this laboratory, students will observe some aspects of animal behavior. In Exercise 11A, they will observe pillbugs and design an experiment to investigate their responses to environmental variables. In Exercise 11B, they will also observe and investigate mating behavior in fruit flies. You may suggest other organisms or other types of animal behavior to study.

Objectives

Before doing this laboratory, students should understand:

- the concept of distribution of organisms in a resource gradient; and
- the difference between kinesis and taxis.

After doing this laboratory, students should be able to:

- describe some aspects of animal behavior, such as orientation behavior, agonistic behavior, dominance display, or mating behavior; and
- understand the adaptiveness of the behaviors they studied.

Laboratory 12. Dissolved Oxygen and Aquatic Primary Productivity

Overview

In Exercise 12A, students will measure and analyze the dissolved oxygen (DO) concentration in water samples at varying temperatures. In Exercise 12B, they will measure and analyze the primary productivity of natural waters or laboratory cultures using screens to simulate the attenuation of light with increasing depth.

Objectives

Before doing this laboratory, students should understand:

- the biological importance of carbon and oxygen cycling in ecosystems;
- how primary productivity relates to the metabolism of organisms in an ecosystem;
- the physical and biological factors that affect the solubility of gasses in aquatic ecosystems; and
- the relationship between dissolved oxygen and the process of photosynthesis and respiration and how these processes affect primary productivity.

After doing this laboratory, students should be able to:

- measure primary productivity based on changes in dissolved oxygen in a controlled experiment; and
- investigate the effects of changing light intensity and/or inorganic nutrient concentrations on primary productivity in a controlled experiment.

The Exam

The AP Biology Exam is three hours in length and is designed to measure a student's knowledge and understanding of modern biology. The exam consists of an 80-minute, 100-item multiple-choice section, which examines the student's understanding of representative content and concepts drawn from across the entire course; a 10-minute reading period; and a 90-minute free-response section, consisting of four mandatory questions that encompass broader topics. The number of multiple-choice questions taken from each major subset of biology reflects the approximate percentage of the course as designated in the Course Description (see the Topic Outline beginning on page 5). In the free-response portion of the exam, usually one essay question is taken from Area I of the outline (Molecules and Cells), and another question focuses on Area II (Heredity and Evolution). Two questions generally focus on Area III of the outline (Organisms and Populations). Any of these four questions may require the student to analyze and interpret data or information drawn from laboratory experience, as well as from lecture material, and may require students to integrate material from different areas of the course.

The multiple-choice section counts for 60 percent of the student's exam grade, and the free-response section counts for 40 percent. Within the free-response section, each of the four questions is weighted equally. The answers to the free-response questions must be in essay form; outlines alone or unlabeled and unexplained diagrams alone are not acceptable. The students should read each question carefully, organize their material neatly, and compose answers that are as comprehensive and precise as time permits.

To provide the maximum information about differences in students' achievements in biology, the exams are intended to have average scores of about 50 percent of the maximum possible score for the multiple-choice section and for the free-response section. Thus, students should be aware that they may find these exams more difficult than most classroom exams. However, it is possible for students who have studied most but not all of the topics in the outline to obtain acceptable grades.

To be broad enough in scope to give every student who has covered an adequate amount of material an opportunity to perform well, the multiple-choice section must be so comprehensive that no student should be expected to attain a perfect or near-perfect score. Thought-provoking problems and questions based on fundamental ideas from biology are included, along with questions based on the recall of basic facts and major concepts. In this section of the exam, as a correction for haphazard guessing, one-fourth of the number of questions answered incorrectly will be subtracted from the number of questions answered correctly.

The free-response section asks the students to organize answers to broad questions, thereby demonstrating reasoning and analytical skills as well as an ability to synthesize material from several sources into a cogent and coherent essay. To prepare for such questions, students should practice writing free-response answers whenever appropriate during the course.

Sample Multiple-Choice Questions

Examples of the kinds of objective questions that may be used in the exam follow. This is NOT a complete exam. (Answers are given on page 36.) Additional sample questions can be found at AP Central.

Directions: Each of the questions or incomplete statements below is followed by five suggested answers or completions. Select the one that is best in each case.

1. Which of the following best describes an intimate ecological association in which an organism benefits from living on or within a host, but which generally has a negative effect on that host?
 - (A) Mutualism
 - (B) Saprophytism
 - (C) Commensalism
 - (D) Parasitism
 - (E) Predation
2. While studying a cell with the electron microscope, a scientist notes the following: numerous ribosomes, a well-developed endoplasmic reticulum, chloroplasts, and a cell wall. Which of the following could be the source of this cell?
 - (A) A fungus
 - (B) An animal
 - (C) A bacterium
 - (D) A plant
 - (E) A virus

3. Which of the following statements best summarizes organic evolution as it is viewed by modern evolutionists?
- (A) It is goal directed.
 - (B) It represents the results of selection for acquired characteristics.
 - (C) It is synonymous with the process of gene flow.
 - (D) It is the descent of humans from the present-day great apes.
 - (E) It is the differential survival and reproduction of certain phenotypes.
4. If a segment of DNA is 5'-TAC GAT TAG-3', the RNA that results from the transcription of this segment will be
- (A) 3'-TAC GAT TAU-5'
 - (B) 3'-ATG CTA ATA-5'
 - (C) 3'-UAC GAU UAG-5'
 - (D) 3'-AAC GAU UAA-5'
 - (E) 3'-AUG CUA AUC-5'
5. The bones of a human arm are homologous to structures in all of the following EXCEPT a
- (A) whale flipper
 - (B) bat wing
 - (C) butterfly wing
 - (D) bird wing
 - (E) frog forelimb
6. Regarding mitosis and cytokinesis, one difference between higher plants and animals is that in plants
- (A) the spindles contain cellulose microfibrils in addition to microtubules, whereas animal spindles do not contain microfibrils
 - (B) sister chromatids are identical, whereas in animals they differ from one another
 - (C) a cell plate begins to form at telophase, whereas in animals a cleavage furrow is initiated at that stage
 - (D) chromosomes become attached to the spindle at prophase, whereas in animals chromosomes do not become attached until anaphase
 - (E) spindle poles contain centrioles, whereas spindle poles in animals do not

7. A common feature of starch and glycogen is that molecules of both
- (A) form microfibrils that give support to connective tissue fibers
 - (B) contain repeated monomers of glucose and galactose
 - (C) are important structural components of plant cell walls
 - (D) are polymers of glucose
 - (E) are water-soluble disaccharides
8. The ancestors of land plants most likely resembled modern-day members of the
- (A) Cyanobacteria (blue-green algae)
 - (B) Rhodophyta (red algae)
 - (C) Chlorophyta (green algae)
 - (D) Phaeophyta (brown algae)
 - (E) Chrysophyta (diatoms and golden-brown algae)
9. Which of the following offers the best description of neural transmission across a mammalian synaptic gap?
- (A) Neural impulses involve the flow of K^+ and Na^+ across the gap.
 - (B) Neural impulses travel across the gap as electrical currents.
 - (C) Neural impulses cause the release of chemicals that diffuse across the gap.
 - (D) Neural impulses travel across the gap in both directions.
 - (E) The calcium within the axons and dendrites of nerves adjacent to a synapse acts as the neurotransmitter.
10. Which of the following statements is true about the Krebs (citric acid) cycle and the Calvin (light-independent) cycle?
- (A) They both result in a net production of ATP and NADH.
 - (B) They both require a net input of ATP.
 - (C) They both result in a release of oxygen.
 - (D) They both take place within the cytoplasmic matrix.
 - (E) They both are carried out by enzymes located within an organelle matrix.

11. Two fossil vertebrates, each representing a different class, are found in the undisturbed rock layers of a cliff. One fossil is a representative of the earliest amphibians. The other fossil, found in an older rock layer below the amphibian, is most likely to be
- (A) a dinosaur
 - (B) a fish
 - (C) an insectivorous mammal
 - (D) a snake
 - (E) a bird
12. The bonding of two amino acid molecules to form a larger molecule requires
- (A) the release of a water molecule
 - (B) the release of a carbon dioxide molecule
 - (C) the addition of a nitrogen atom
 - (D) the addition of a water molecule
 - (E) an increase in activation energy
13. If young male zebra finches are raised by foster parents of another species, the Bengalese finch, they will court female Bengalese finches instead of females of their own species. This behavior results from which of the following?
- (A) Imprinting
 - (B) Habituation
 - (C) Conditioning
 - (D) Reinforcement
 - (E) Pheromones

14. The relative location of four genes on a chromosome can be mapped from the following data on crossover frequencies

<i>Genes</i>	<i>Frequency of Crossover</i>
<i>B</i> and <i>D</i>	5%
<i>C</i> and <i>A</i>	15%
<i>A</i> and <i>B</i>	30%
<i>C</i> and <i>B</i>	45%
<i>C</i> and <i>D</i>	50%

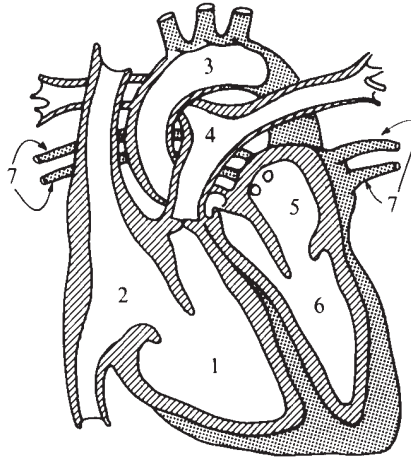
Which of the following represents the relative positions of these four genes on the chromosome?

- (A) *ABCD*
- (B) *ADCB*
- (C) *CABD*
- (D) *CBAD*
- (E) *DBCA*

15. When hydrogen ions are pumped out of the mitochondrial matrix, across the inner mitochondrial membrane, and into the space between the inner and outer membranes, the result is
- (A) damage to the mitochondrion
 - (B) the reduction of NAD
 - (C) the restoration of the Na-K balance across the membrane
 - (D) the creation of a proton gradient
 - (E) the lowering of pH in the mitochondrial matrix
16. Once transcribed, eukaryotic mRNA typically undergoes substantial alteration that results primarily from
- (A) excision of introns
 - (B) fusion into circular forms known as plasmids
 - (C) linkage to histone molecules
 - (D) union with ribosomes
 - (E) fusion with other newly transcribed mRNA molecules to form larger translatable units
17. The function of water in photosynthesis is to
- (A) combine with CO_2
 - (B) absorb light energy
 - (C) supply electrons in the light-dependent reactions
 - (D) transport H^+ ions in the light-independent (dark) reactions
 - (E) provide O_2 for the light-independent (dark) reactions

Questions 18-19

Questions 18-19 refer to the diagram below of the adult human heart.

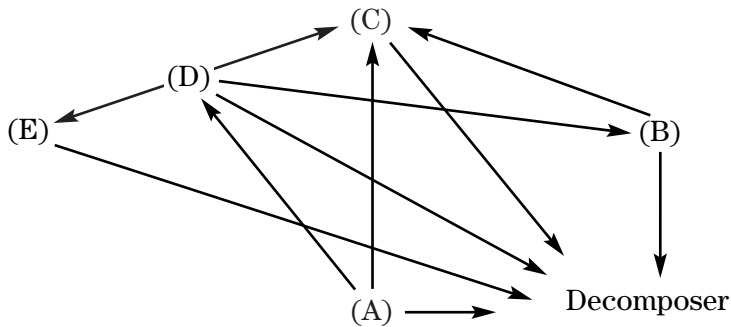


18. Chambers or vessels that carry oxygenated blood include which of the following?
- (A) 3 only
 - (B) 1 and 2 only
 - (C) 5 and 6 only
 - (D) 1, 2, and 3
 - (E) 3, 5, and 6
19. The correct sequence of blood flow beginning at the pulmonary arteries and passing through the lungs and the systemic circulation is
- (A) 2 - 1 - 4 - systemic - 3 - 6 - 5 - 7 - lungs
 - (B) 3 - 6 - 5 - 7 - systemic - 4 - 1 - 2 - lungs
 - (C) 4 - lungs - 7 - 5 - 6 - 3 - systemic - 2 - 1
 - (D) 6 - 4 - lungs - 3 - systemic - 2 - 1 - 5 - 7
 - (E) 7 - 5 - 6 - systemic - 2 - 1 - 4 - lungs - 3

Directions: Each set of lettered choices below refers to the numbered words or statements immediately following it. Select the one lettered choice that best fits each word or statement. A choice may be used once, more than once, or not at all in each set.

Questions 20-23

The figure below represents a food web in a particular ecosystem. Each letter represents a species. The arrows indicate the direction of energy flow.



20. Which species would most likely represent humans if they were part of this ecosystem?
21. A photosynthetic organism would be represented by which species?
22. Members of which species are herbivores?
23. Members of which species are most likely to be omnivorous?

Questions 24-27

- (A) Centriole
 - (B) Lysosome
 - (C) Nucleolus
 - (D) Peroxisome
 - (E) Ribosome
24. Found in both prokaryotic and eukaryotic cells
25. Possesses a microtubular structure similar in form to a basal body
26. Assembles ribosomal precursors
27. Contains hydrolytic enzymes associated with the intracellular digestion of macromolecules

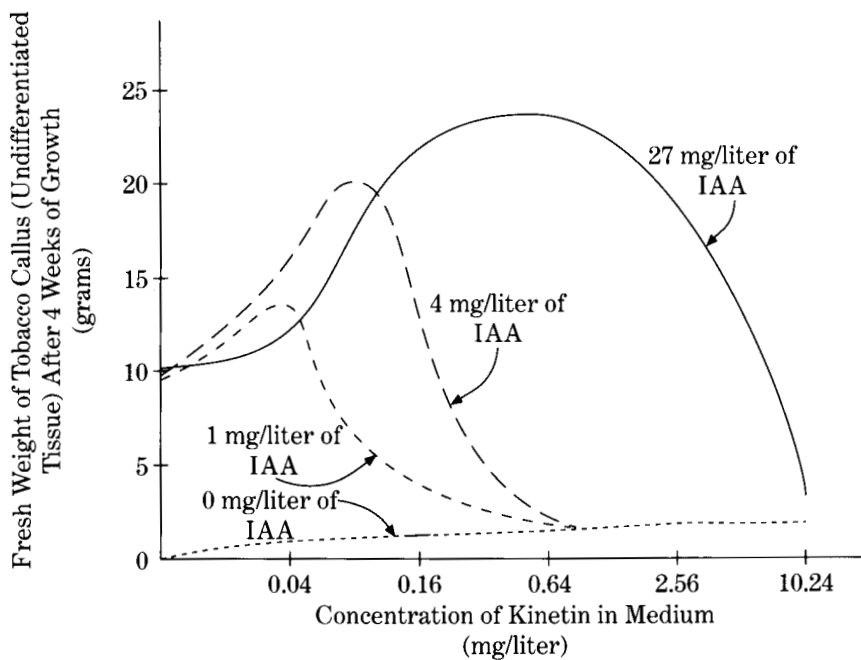
Questions 28-30

- (A) Grassland
 - (B) Taiga
 - (C) Deciduous forest
 - (D) Tundra
 - (E) Tropical rain forest
28. This biome exhibits the greatest diversity in plant species.
29. In this biome, agriculture is commonly practiced in a “cut-burn-cultivate-abandon” mode.
30. This biome can be recognized by its coniferous forests and relatively infertile, acidic soil.

Directions: Each group of questions below concerns an experimental or a laboratory situation. In each case, first study the description of the situation. Then choose the one best answer to each question following it.

Questions 31-32

Questions 31-32 refer to the data presented in the graph below of tobacco cells grown in tissue culture. The numbers on the curves indicate the concentrations of indoleacetic acid (IAA) in milligrams per liter.



31. The optimum concentrations of hormones for promoting maximum tobacco cell growth are
- (A) 27 mg/liter of IAA alone
 - (B) 27 mg/liter of IAA and 2.56 mg/liter of kinetin
 - (C) 27 mg/liter of IAA and 0.64 mg/liter of kinetin
 - (D) 4 mg/liter of IAA and 0.64 mg/liter of kinetin
 - (E) 1 mg/liter of IAA and 0.64 mg/liter of kinetin
32. The purpose of the experiment is primarily to determine the
- (A) effect of IAA on the growth of tobacco cells
 - (B) amount of hormone normally released by tobacco cells in tissue culture
 - (C) response of tobacco cells in tissue culture to synthetic hormones
 - (D) response of kinetin to various concentrations of IAA only
 - (E) response of tobacco cells in tissue culture to combinations of IAA and kinetin

Questions 33-34

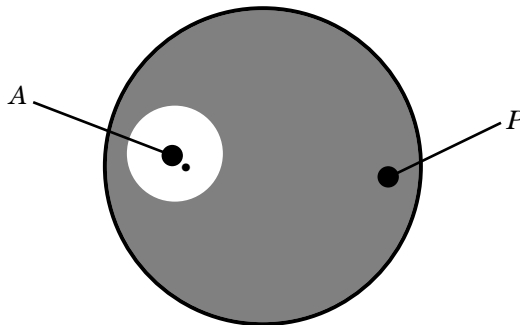


Plate I

A sterile agar plate, I, is streaked with a pure culture of bacteria by means of aseptic techniques. Paper discs treated with the antibiotics Aureomycin (A) and penicillin (P) are placed at opposite sides of the plate, as shown in the diagram above. The plate is examined after a 24-hour incubation period, and a clear ring is discovered around disc A, but not around disc P. Within the clear ring around disc A, a single bacterial colony with physical characteristics like those of the pure culture is observed. A second sterile agar plate, II, is then streaked with this single colony and also incubated with antibiotics.

33. The single colony found within the clear ring in plate I is most likely made up of the descendants of a bacterial cell that
- (A) contaminated the agar plate
 - (B) contained information conferring resistance to Aureomycin
 - (C) changed its response to Aureomycin as a result of being exposed to the antibiotic
 - (D) was susceptible to both penicillin and Aureomycin
 - (E) emigrated from another area of the agar plate
34. Which of the following would most likely be observed in plate II after 24 hours?
- (A) A clear ring larger than that around disc A in plate I would appear around disc A only.
 - (B) A clear ring larger than that around disc A in plate I would appear around disc P only.
 - (C) A clear ring smaller than that around disc A in plate I would appear around disc P only.
 - (D) There would be a clear ring around both disc A and disc P.
 - (E) There would not be a clear ring around either disc A or disc P.

Questions 35-37

In dogs, one pair of alleles determines coat color (dark and albino). Another pair of alleles determines hair length (short and long). Thus, each gamete will contain one of the coat-color alleles, C or c , and one of the hair-length alleles, B or b . In repeated crosses of a specific dark, short-haired dog with an albino, long-haired dog, all the offspring were dark with short hair, as shown in cross I. However, in subsequent crosses of another dark, short-haired dog with a dark, long-haired dog, the ratios shown in cross II below were obtained.

<i>Cross</i>	<i>Parents</i>	<i>Offspring</i>
I.	Dark, short hair x Albino, long hair	All dark, short hair
II.	Dark, short hair x Dark, long hair	3 dark, short hair 3 dark, long hair 1 albino, short hair 1 albino, long hair

35. In cross II, the genotype of the dark, short-haired parent is
- (A) $CcBb$
 - (B) $ccbb$
 - (C) $CCBB$
 - (D) $CCbb$
 - (E) $ccBB$
36. Which of the following is probably the genotype of the dark, short-haired parent in cross I?
- (A) $CcBb$
 - (B) $ccbb$
 - (C) $CCBB$
 - (D) $CCbb$
 - (E) $ccBB$
37. Which of the following correctly describes the relationship of the dark-coat-color allele to the albino condition?
- (A) It is dominant.
 - (B) It is recessive.
 - (C) It is codominant.
 - (D) It is a polygenic inheritance pattern.
 - (E) The alleles are linked.

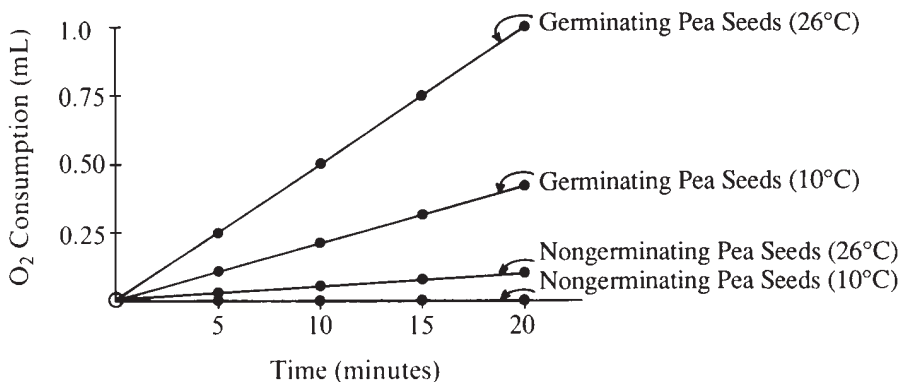
Questions 38-40

A large population of laboratory animals has been allowed to breed randomly for a number of generations. After several generations, 49 percent of the animals display a recessive trait (bb), the same percentage as at the beginning of the breeding program. The rest of the animals show the dominant phenotype, with heterozygotes indistinguishable from the homozygous dominants.

38. What is the most reasonable conclusion that can be drawn from the fact that the frequency of allele b has not changed over time?
- (A) The population is undergoing genetic drift.
 - (B) The two phenotypes are equally adaptive under laboratory conditions.
 - (C) The genotype BB is lethal.
 - (D) There has been a high rate of mutation of allele B to allele b .
 - (E) There has been sexual selection favoring allele b .
39. What is the frequency of allele b in the gene pool?
- (A) 0.70
 - (B) 0.51
 - (C) 0.49
 - (D) 0.30
 - (E) 0.07
40. What proportion of the population is heterozygous (Bb) for this trait?
- (A) 0.51
 - (B) 0.42
 - (C) 0.21
 - (D) 0.09
 - (E) 0.07

Questions 41-42

Questions 41-42 refer to an experiment that is set up to determine the relative volume of O_2 consumed by germinating and nongerminating (dry) pea seeds at two different temperatures. The change in volume is detected by using a respirometer over a given period of time. The data are given below.



41. The rate of oxygen consumption in germinating pea seeds at 26°C is
- (A) 0.05 mL / min
 - (B) 0.25 mL / min
 - (C) 0.50 mL / min
 - (D) 0.75 mL / min
 - (E) 1.00 mL / min
42. Which of the following conclusions is best supported by the data?
- (A) Nongerminating pea seeds have a higher rate of respiration than germinating pea seeds do.
 - (B) Light is required for pea seed germination.
 - (C) In the nongerminating pea seeds, oxygen consumption is directly proportional to oxygen concentration.
 - (D) Less carbon dioxide is produced by germinating pea seeds at 26°C than at 10°C.
 - (E) In pea seeds an increase in temperature results in an increase in oxygen consumption.

Questions 43-45

Individuals of a particular species of ground beetle are either light tan or dark brown. Light-tan beetles are predominant in habitats with light-colored sandy soils, and dark-brown beetles are predominant in habitats with dark-colored loam soils. In an experiment designed to determine the survival rates of light-tan beetles and dark-brown beetles in different habitats, 500 light-tan beetles and 500 dark-brown beetles were released in each of four habitats. Each beetle had been marked with a small spot of red paint on the underside of its abdomen before it was released. One week after the beetles had been released, any marked beetles that could be found were recaptured. The results are presented in the table below. It is assumed that differences in the numbers of beetles recaptured are directly related to differences in survival rates.

	<u>Habitat 1</u> Sandy soil, no insectivorous birds present		<u>Habitat 2</u> Sandy soil, insectivorous birds present		<u>Habitat 3</u> Loam soil, no insectivorous birds present		<u>Habitat 4</u> Loam soil, insectivorous birds present	
Color of Beetle	Light tan	Dark brown	Light tan	Dark brown	Light tan	Dark brown	Light tan	Dark brown
Number Released	500	500	500	500	500	500	500	500
Number Recaptured	130	114	123	22	65	74	13	87

43. Which of the following processes best explains why fewer light-tan beetles than dark-brown beetles were recaptured in habitat 4?
- (A) Immigration
 - (B) Genetic drift
 - (C) Mutation
 - (D) Adaptive radiation
 - (E) Predation

44. If all insectivorous birds and remaining beetles were removed from habitat 2 and 500 additional dark-brown beetles and 500 additional light-tan beetles were then released into habitat 2, which of the following is the best estimate of the number of additional dark-brown beetles that would be expected to be recaptured in habitat 2 after one more week?
- (A) 0
 (B) 22
 (C) 120
 (D) 220
 (E) 500
45. Which of the following can be inferred from the data in the table?
- (A) Ground beetles do not emigrate from the habitat in which they live.
 (B) Insectivorous birds prefer to eat light-tan beetles rather than dark-brown beetles.
 (C) Ground beetles have higher rates of survival in habitats with loam soil.
 (D) Insectivorous birds are predators of this species of ground beetle.
 (E) The reproductive success of beetles in habitats with sandy soils is greater than that of beetles in habitats with loam soils.

Answers to Multiple-Choice Questions

1 - D	9 - C	17 - C	25 - A	33 - B	41 - A
2 - D	10 - E	18 - E	26 - C	34 - E	42 - E
3 - E	11 - B	19 - C	27 - B	35 - A	43 - E
4 - E	12 - A	20 - C	28 - E	36 - C	44 - C
5 - C	13 - A	21 - A	29 - E	37 - A	45 - D
6 - C	14 - C	22 - D	30 - B	38 - B	
7 - D	15 - D	23 - C	31 - C	39 - A	
8 - C	16 - A	24 - E	32 - E	40 - B	

Sample Free-Response Questions

Four mandatory questions will be asked. In general, there will be one on molecules and cells, one on genetics and evolution, and two on organisms and populations. Some questions may cover more than one of these areas. One or more of the four questions may be designed to test analytical and reasoning skills. The laboratory experiences may be reflected in these questions.

Questions from the 2004 exam are presented here. Additional sample questions can be found at AP Central.

1. Meiosis reduces chromosome number and rearranges genetic information.
 - (a) **Explain** how the reduction and rearrangement are accomplished in meiosis.
 - (b) Several human disorders occur as a result of defects in the meiotic process. **Identify** ONE such chromosomal abnormality; what effects does it have on the phenotype of people with the disorder? **Describe** how this abnormality could result from a defect in meiosis.
 - (c) Production of offspring by parthenogenesis or cloning bypasses the typical meiotic process. **Describe** either parthenogenesis or cloning and **compare** the genomes of the offspring with those of the parents.

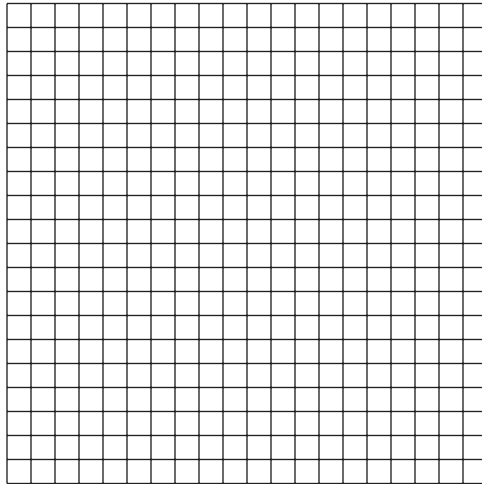
2. Darwin is considered the “father of evolutionary biology.” Four of his contributions to the field of evolutionary biology are listed below.
 - The nonconstancy of species
 - Branching evolution, which implies the common descent of all species
 - Occurrence of gradual changes in species
 - Natural selection as the mechanism for evolution
 - (a) For EACH of the four contributions listed above, **discuss** one example of supporting evidence.
 - (b) Darwin’s ideas have been enhanced and modified as new knowledge and technologies have become available. **Discuss** how TWO of the following have modified biologists’ interpretation of Darwin’s original contributions.
 - Hardy-Weinberg equilibrium
 - Punctuated equilibrium
 - Genetic engineering

3. A controlled experiment was conducted to analyze the effects of darkness and boiling on the photosynthetic rate of incubated chloroplast suspensions. The dye reduction technique was used. Each chloroplast suspension was mixed with DPIP, an electron acceptor that changes from blue to clear when it is reduced. Each sample was placed individually in a spectrophotometer and the percent transmittance was recorded. The three samples used were prepared as follows.

- Sample 1 – chloroplast suspension + DPIP
- Sample 2 – chloroplast suspension surrounded by foil wrap to provide a dark environment + DPIP
- Sample 3 – chloroplast suspension that has been boiled + DPIP

Percent Transmittance in Three Samples			
Time (min)	Light, Unboiled % Transmittance	Dark, Unboiled % Transmittance	Light, Boiled % Transmittance
	Sample 1	Sample 2	Sample 3
0	28.8	29.2	28.8
5	48.7	30.1	29.2
10	57.8	31.2	29.4
15	62.5	32.4	28.7
20	66.7	31.8	28.5

- (a) On the axes provided on page 39, **construct** and **label** a graph showing the results for the three samples.
- (b) **Identify** and **explain** the control or controls for this experiment.
- (c) The differences in the curves of the graphed data indicate that there were differences in the number of electrons produced in the three samples during the experiment. **Discuss** how electrons are generated in photosynthesis and why the three samples gave different transmittance results.



4. Organisms rarely exist alone in the natural environment. The following are five examples of symbiotic relationships.

- Plant root nodules
- Digestion of cellulose
- Epiphytic plants
- AIDS (acquired immune deficiency syndrome)
- Anthrax

Choose FOUR of the above and for each example chosen,

- (a) **identify** the participants involved in the symbiosis and describe the symbiotic relationship, and
- (b) **discuss** the specific benefit or detriment, if any, that each participant receives from the relationship.

AP[®] Program Essentials

The AP Reading

Each year in June, the free-response section of the exams, as well as the AP Studio Art portfolios, are scored by college faculty and secondary school AP teachers at the AP Reading. Thousands of Readers participate, under the direction of a Chief Reader (a college professor) in each AP subject. The experience offers both significant professional development and the opportunity to network with like-minded educators.

If you are an AP teacher or a college faculty member and would like to serve as a Reader, you can apply online at apcentral.collegeboard.com/reader. Alternatively, you can send an e-mail to apreader@ets.org, or call Performance Assessment Scoring Services at 609 406-5384.

AP Grades

The Readers' scores on the essay and problem-solving questions are combined with the results of the computer-scored multiple-choice questions, and the total raw scores are converted to a composite score on AP's 5-point scale:

AP GRADE	QUALIFICATION
5	Extremely well qualified
4	Well qualified
3	Qualified
2	Possibly qualified
1	No recommendation

Grade Distributions

Many teachers want to compare their students' grades with national percentiles. Grade distribution charts are available at AP Central, as is information on how the grade boundaries for each AP grade are established. Grade distribution charts are also available on the AP student site at www.collegeboard.com/apstudents.

Why Colleges Grant Credit, Placement, or Both for AP Grades

Colleges know that the AP grades of incoming students represent a level of achievement equivalent to that of students who take the same course in the colleges' own classrooms. That equivalency is ensured through several AP Program processes:

- College faculty serve on the committees that develop the Course Descriptions and exams in each AP course.
- College faculty are responsible for standard setting and are involved in the evaluation of student responses at the AP Reading.
- AP courses and exams are reviewed and updated regularly, based on the results of curriculum surveys at up to 200 colleges and universities, collaborations among the College Board and key educational and disciplinary organizations, and the interactions of committee members with professional organizations in their discipline.
- Periodic college comparability studies are undertaken in which the performance of college students on AP Exams is compared with that of AP students to confirm that the AP grade scale of 1 to 5 is properly aligned with current college standards.

In addition, the College Board has commissioned studies that use a “bottom-line” approach to validating AP Exam grades by comparing the achievement of AP students with non-AP students in higher level college courses. For example, in the 1998 Morgan and Ramist “21-College” study, AP students who were exempted from introductory courses and who completed a higher level course in college compared favorably, on the basis of their college grades, with students who completed the prerequisite first course in college, then took the second, higher level course in the subject area. Such studies answer the question of greatest concern to colleges: Are AP students who are exempted from introductory courses as well prepared to continue in a subject area as students who took their first course in college? To see the results of several college validity studies, go to AP Central. (The complete Morgan and Ramist study can be downloaded from the site.)

Guidelines on Setting Credit and Placement Policies for AP Grades

The College Board has created two useful resources for admissions administrators and academic faculty who need guidance on setting an AP policy for their college or university. The printed guide *AP and Higher Education* provides guidance for colleges and universities in setting AP credit and placement policies. The booklet details how to set an AP policy, summarizes AP research studies, and describes in detail course and exam development and the exam scoring process. AP Central has a section geared toward colleges and universities that provides similar information and additional resources, including links to all AP research studies, released exam questions, and sample student responses at varying levels of achievement for each AP Exam. Visit apcentral.collegeboard.com/highered.

The *Advanced Placement Policy Guide* for each AP subject field is designed for college faculty responsible for setting their department's AP policy. These folios provide content specific to each AP Exam, including validity research studies and a description of the AP course curriculum. Ordering information for these and other publications can be found in the AP Publications and Other Resources section of this Course Description.

College and University AP Credit and Placement Policies

Each college and university sets its own AP credit and placement policies. The AP Program has created a new online search tool, AP Credit Policy Info, that provides links to credit and placement policies at hundreds of colleges and universities. The tool helps students find the credit hours and advanced placement they can receive for qualifying exam scores within each AP subject. AP Credit Policy Info is available at www.collegeboard.com/ap/creditpolicy.

AP Scholar Awards

The AP Program offers a number of AP Scholar Awards to recognize high school students who have demonstrated college-level achievement through consistently high performance on AP Exams. Although there is no monetary award, students receive an award certificate, and the achievement is acknowledged on any grade report sent to colleges following the announcement of the awards. For detailed information about AP Scholar Awards (including qualification criteria), visit AP Central or contact the College Board's national office. Students can find this information at www.collegeboard.com/apstudents.

AP Calendar

The *AP Program Guide* for education professionals and the *Bulletin for AP Students and Parents* provide important Program information and details on the key events in the AP calendar. Information on ordering or downloading these publications can be found at the back of this book.

Exam Security

All parts of every AP Exam must be kept secure at all times. Forty-eight hours after the exam has been administered, the inserts containing the free-response questions (Section II) can be made available for teacher and student review.* **However, the multiple-choice section (Section I) must remain secure both before and after the exam administration.** No one other than students taking the exam can ever have access to or see the questions contained in Section I—this includes AP Coordinators and all teachers. The multiple-choice section must never be shared, copied in any manner, or reconstructed by teachers and students after the exam. **Schools that knowingly or unknowingly violate these policies will not be permitted to administer AP Exams in the future and may be held responsible for any damages or losses the College Board and/or ETS incur in the event of a security breach.**

Selected multiple-choice questions are reused from year to year to provide an essential method of establishing high exam reliability, controlled levels of difficulty, and comparability with earlier exams. These goals can be attained only when the multiple-choice questions remain secure. This is why teachers cannot view the questions, and students cannot share information about these questions with anyone following the exam administration.

To ensure that all students have an equal opportunity to demonstrate their abilities on the exam, AP Exams must be administered in a uniform manner. **It is extremely important to follow the administration schedule and all procedures outlined in detail in the most recent *AP Coordinator's Manual*.** Please note that AP Studio Art portfolios and their contents are not considered secure testing materials; see the *AP Coordinator's Manual* and the appropriate *AP Examination Instructions* book for further information. The *Manual* also includes directions on how to handle misconduct and other security problems. All schools participating in AP automatically receive printed copies of the *Manual*. It is also available in PDF format at apcentral.collegeboard.com/coordinators.

* The free-response section of the alternate form (used for late testing administration) is NOT released.

Any breach of security should be reported to the Office of Testing Integrity immediately (call 800 353-8570 or 609 406-5427, fax 609 406-9709, or e-mail tsreturns@ets.org).

Teacher Support

AP Central® (apcentral.collegeboard.com)

You can find the following Web resources at AP Central (free registration required):

- AP Course Descriptions, AP Exam questions and scoring guidelines, sample syllabi, research reports, and feature articles.
- A searchable Institutes and Workshops database, providing information about professional development events. AP Central offers online events that participants can access from their home or school computers.
- The Course Home Pages (apcentral.collegeboard.com/coursehomepages), which contain insightful articles, teaching tips, activities, lab ideas, and other course-specific content contributed by colleagues in the AP community.
- In-depth FAQs, including brief responses to frequently asked questions about AP courses and exams, the AP Program, and other topics of interest.
- Links to AP publications and products (some available for immediate download) that can be purchased online at the College Board Store (store.collegeboard.com).
- Moderated electronic discussion groups (EDGs) for each AP course to facilitate the exchange of ideas and practices.
- Teachers' Resources database—click on the “Teachers' Resources” tab to search for reviews of textbooks, reference books, documents, Web sites, software, videos, and more. College and high school faculty write the reviews with specific reference to the value of the resources in teaching AP courses.

AP teachers can also obtain a number of AP publications, CD-ROMs, and videos that supplement these Web resources. Please see the following pages for an overview and ordering information.

Online Workshops and Events

College Board online events and workshops are designed to help support and expand the high level of professional development currently offered teachers in workshops and AP Summer Institutes. Because of budgetary, geographical, and time constraints, not all teachers and administrators are able to take advantage of live, face-to-face workshops. The College Board develops and offers both standard and customized online events and workshops for schools, districts, and states, which are available in both live and archival formats. Online events and workshops are developed and presented by experienced College Board consultants and guest speakers; online workshops are equivalent to one-day, face-to-face workshops.

Pre-AP[®]

Pre-AP[®] is a suite of K–12 professional development resources and services designed to help equip middle school and high school teachers with the strategies and tools they need to engage their students in high-level learning, thereby ensuring that every middle school and high school student has the opportunity to acquire a deep understanding of the skills, habits of mind, and concepts they need to succeed in college.

Pre-AP is based on the following premises. The first is the expectation that all students can perform at rigorous academic levels. This expectation should be reflected in the curriculum and instruction throughout the school so that all students are consistently being challenged to bring their knowledge and skills to the next level.

The second important premise of Pre-AP is the belief that educators can prepare every student for higher intellectual engagement by starting the development of skills and the acquisition of knowledge as early as possible. When addressed effectively, the middle school and high school years can provide a powerful opportunity to help all students acquire the knowledge, concepts, and skills needed to engage in a higher level of learning.

Pre-AP teacher professional development explicitly supports the goal of college as an option for every student. It is important to have a recognized standard for college-level academic work. The AP Program provides these standards for Pre-AP. Pre-AP professional development resources reflect the topics, concepts, and skills taught in AP courses and assessed in AP Exams.

The College Board does not design, develop, or assess courses labeled “Pre-AP.” Courses labeled “Pre-AP” that inappropriately restrict access to AP and other college-level work are inconsistent with the fundamental purpose of the Pre-AP initiatives of the College Board. Schools, districts, and policymakers are encouraged to utilize Pre-AP professional

development in a manner that ensures equitable access to rigorous academic experiences for all students.

Pre-AP Professional Development

Pre-AP professional development is available through workshops and conferences coordinated by the College Board’s regional offices. Pre-AP professional development is divided into three categories:

1. **Vertical Teaming**—Articulation of content and pedagogy across the middle school and high school years. The emphasis is on aligning curricula and improving teacher communication. The intended outcome is a coordinated program of teaching skills and concepts over several years.
2. **Classroom Strategies**—Content-specific classroom strategies for middle school and high school teachers. Various approaches, techniques, and ideas are emphasized.
3. **Instructional Leadership**—Administrators and other instructional leaders examine how to use Pre-AP professional development—especially AP Vertical Teams®—to create a system that challenges all students to perform at rigorous academic levels.


For a complete list of Pre-AP professional development offerings, please contact your regional office or visit AP Central.

AP Publications and Other Resources

A number of AP resources are available to help students, parents, AP Coordinators, and high school and college faculty learn more about the AP Program and its courses and exams. To identify resources that may be of particular use to you, refer to the following key.

AP Coordinators and Administrators A
College Faculty C
Students and Parents SP
Teachers T

Free Resources

Copies of the following items can be ordered free of charge at apcentral.collegeboard.com/freepubs. Items marked with a computer mouse icon  can be downloaded for free from AP Central.

 **The Value of AP Courses and Exams** **A, SP, T**

This brochure can be used by school counselors and administrators to provide parents and students with information about the many benefits of participation in AP courses and exams.

AP Tools for Schools Resource Kit **A**

This complimentary resource assists schools in building their AP programs. The kit includes the new video *Experience College Success*, the brochure *The Value of AP Courses and Exams*, and brief descriptions of the AP Credit Policy Info search and the Parent’s Night PowerPoint presentation.

Experience College Success is a six-minute video that provides a short overview of the AP Program, with commentary from admissions officers, college students, and high school faculty about the benefits of participation in AP courses. Each videotape includes both an English and Spanish version.

 **Bulletin for AP Students and Parents** **SP**

This bulletin provides a general description of the AP Program, including information on the policies and procedures related to taking the exams. It describes each AP Exam, lists the advantages of taking the exams, describes the grade reporting process, and includes the upcoming exam schedule. The *Bulletin* is available in both English and Spanish.

 **Opening Classroom Doors: Strategies for Expanding Access to AP** **A, T**


Increasing AP participation while maintaining the Program’s high academic standards is a challenge for many schools. This booklet profiles best practices from urban, suburban, and rural schools nationwide that have successfully met this challenge, and offers powerful strategies for fostering a culture of excellence and equity.

 **Get with the Program** **SP**

All students, especially those from underserved backgrounds, should understand the value of a high-quality education. Written especially for students and their families, this bilingual (Spanish/English) brochure highlights the benefits of participation in the AP Program. (The brochure can be ordered in large quantities for students in grades 8–12.)

 **AP Program Guide** **A**

This guide takes the AP Coordinator through the school year step by step—organizing an AP program, ordering and administering the AP Exams, AP Exam payment, and grade reporting. It also includes information on teacher professional development, AP resources, and exam schedules.

 **AP and Higher Education** **A, C, T**

This publication is intended to inform and help education professionals at the secondary and postsecondary levels understand the benefits of having a coherent, equitable AP credit and placement policy. Topics included are the development of AP courses and exams, grading of AP Exams, exam validation, research studies comparing the performance of AP students with non-AP students, uses of AP Exams by students in college, and how faculty can get involved in the AP Program.

 **Advanced Placement Policy Guides** **A, C, T**

These policy guides are designed for college faculty responsible for setting their department's AP policy, and provide, in a subject-specific context, information about AP validity studies, college faculty involvement, and AP course curricular content. There are separate guides for each AP subject field.

Priced Publications

The following items can be ordered through the College Board Store at store.collegeboard.com. Alternatively, you can download an AP Order Form from AP Central at apcentral.collegeboard.com/documentlibrary.

 **Course Descriptions** **A, C, SP, T**

Course Descriptions are available for each AP subject. They provide an outline of each AP course's content, explain the kinds of skills students are expected to demonstrate in the corresponding introductory college-level course, and describe the AP Exam. Sample multiple-choice questions with an answer key and sample free-response questions are included.

Note: PDF versions of current AP Course Descriptions for each AP subject may be downloaded free of charge from AP Central and the College Board's Web site for students. Follow the above instructions to purchase printed copies. (The Course Description for AP Computer Science is available in electronic format only.)

Released Exams

C, T

About every four or five years, on a rotating schedule, the AP Program releases a complete copy of each exam. In addition to providing the multiple-choice questions and answers, the publication describes the process of scoring the free-response questions and includes examples of students' actual responses, the scoring standards, and commentary that explains why the responses received the scores they did.

Teacher's Guides

T

For those about to teach an AP course for the first time, or for experienced AP teachers who would like to get some fresh ideas for the classroom, the *Teacher's Guide* is an excellent resource. Each *Teacher's Guide* contains syllabi developed by high school teachers currently teaching the AP course and college faculty who teach the equivalent course at colleges and universities. Along with detailed course outlines and innovative teaching tips, you'll also find extensive lists of suggested teaching resources.

AP Vertical Teams® Guides

A, T

AP Vertical Teams (APVT) are made up of teachers from different grade levels who work together to develop and implement a sequential curriculum in a given discipline. Teams help students acquire the skills necessary for success in AP courses. To assist teachers and administrators who are interested in establishing an APVT at their school, the College Board has published these guides: *AP Vertical Teams Guide for English*; *Advanced Placement Mathematics Vertical Teams Toolkit*; *AP Vertical Teams Guide for Science*; *AP Vertical Teams Guide for Social Studies*; *AP Vertical Teams Guide for Fine Arts, Vol. 1: Studio Art*; *AP Vertical Teams Guide for Fine Arts, Vol. 2: Music Theory*; and *AP Vertical Teams Guide for Fine Arts, Vols. 1 and 2* (set).

Multimedia APCD®

(home version, multinetwork site license)

SP, T

These CD-ROMs are available for AP Calculus AB, AP English Language, AP English Literature, AP European History, and AP U.S. History. They each include actual AP Exams, interactive tutorials, and other features, including exam descriptions, answers to frequently asked questions, study-skill suggestions, and test-taking strategies. Also included are a listing of resources for further study and a planner to help students schedule and organize their study time.

The teacher version of each CD, which can be licensed for up to 50 workstations, enables you to monitor student progress and provide individual feedback. Included is a Teacher's Manual that gives full explanations along with suggestions for utilizing the APCD in the classroom.

Electronic Publications

Additional supplemental publications are available in electronic format to be purchased and downloaded from the College Board Store. These include a collection of 13 World History Teaching Units, Calculus free-response questions and solutions from 1969 to 1997, the *Physics Lab Guide*, and a collection of Java syllabi for Computer Science.

Announcements of new electronic publications can be found on the AP Course Home Pages on AP Central (apcentral.collegeboard.com/coursehomepages).

Contact Us

NATIONAL OFFICE

Advanced Placement Program
45 Columbus Avenue
New York, NY 10023-6992
212 713-8066
E-mail: ap@collegeboard.org

AP SERVICES

P.O. Box 6671
Princeton, NJ 08541-6671
609 771-7300
877 274-6474 (toll free in the U.S.
and Canada)
E-mail: apexams@info.collegeboard.org

AP CANADA OFFICE

1708 Dolphin Avenue, Suite 406
Kelowna, BC, Canada V1Y 9S4
250 861-9050
800 667-4548 (toll free in Canada only)
E-mail: gewonus@ap.ca

AP INTERNATIONAL OFFICE

*Serving all countries outside the U.S.
and Canada*

45 Columbus Avenue
New York, NY 10023-6992
212 373-8738
E-mail: apintl@collegeboard.org

MIDDLE STATES REGIONAL OFFICE

*Serving Delaware, District of Columbia,
Maryland, New Jersey, New York, Pennsylvania,
Puerto Rico, and the U.S. Virgin Islands*

Two Bala Plaza, Suite 900
Bala Cynwyd, PA 19004-1501
866 392-3019
E-mail: msro@collegeboard.org

MIDWESTERN REGIONAL OFFICE

*Serving Illinois, Indiana, Iowa, Kansas,
Michigan, Minnesota, Missouri, Nebraska,
North Dakota, Ohio, South Dakota, West Virginia,
and Wisconsin*

1560 Sherman Avenue, Suite 1001
Evanston, IL 60201-4805
866 392-4086
E-mail: mro@collegeboard.org

NEW ENGLAND REGIONAL OFFICE

*Serving Connecticut, Maine, Massachusetts,
New Hampshire, Rhode Island, and Vermont*

470 Totten Pond Road
Waltham, MA 02451-1982
866 392-4089
E-mail: nero@collegeboard.org

SOUTHERN REGIONAL OFFICE

*Serving Alabama, Florida, Georgia, Kentucky,
Louisiana, Mississippi, North Carolina, South
Carolina, Tennessee, and Virginia*

3700 Crestwood Parkway NW, Suite 700
Duluth, GA 30096-7155
866 392-4088
E-mail: sro@collegeboard.org

SOUTHWESTERN REGIONAL OFFICE

*Serving Arkansas, New Mexico, Oklahoma,
and Texas*

4330 South MoPac Expressway, Suite 200
Austin, TX 78735-6735
866 392-3017
E-mail: swro@collegeboard.org

WESTERN REGIONAL OFFICE

*Serving Alaska, Arizona, California, Colorado,
Hawaii, Idaho, Montana, Nevada, Oregon, Utah,
Washington, and Wyoming*

2099 Gateway Place, Suite 550
San Jose, CA 95110-1051
866 392-4078
E-mail: wro@collegeboard.org



2004-05 Development Committee and Chief Reader

Rob Cannon, University of North Carolina at Greensboro, *Chair*

Ronald Balsamo, Villanova University, Pennsylvania

Mike Basham, El Dorado High School, Placerville, California

Eileen Gregory, Rollins College, Winter Park, Florida

John McMillian, Central High School, Philadelphia, Pennsylvania

Carolyn Schofield, Robert E. Lee High School, Tyler, Texas

Chief Reader: **Dwayne Wise**, Mississippi State University

ETS Consultants: **Beth Nichols, Nancy Olds, Israel Solon**

apcentral.collegeboard.com

I.N. 727258